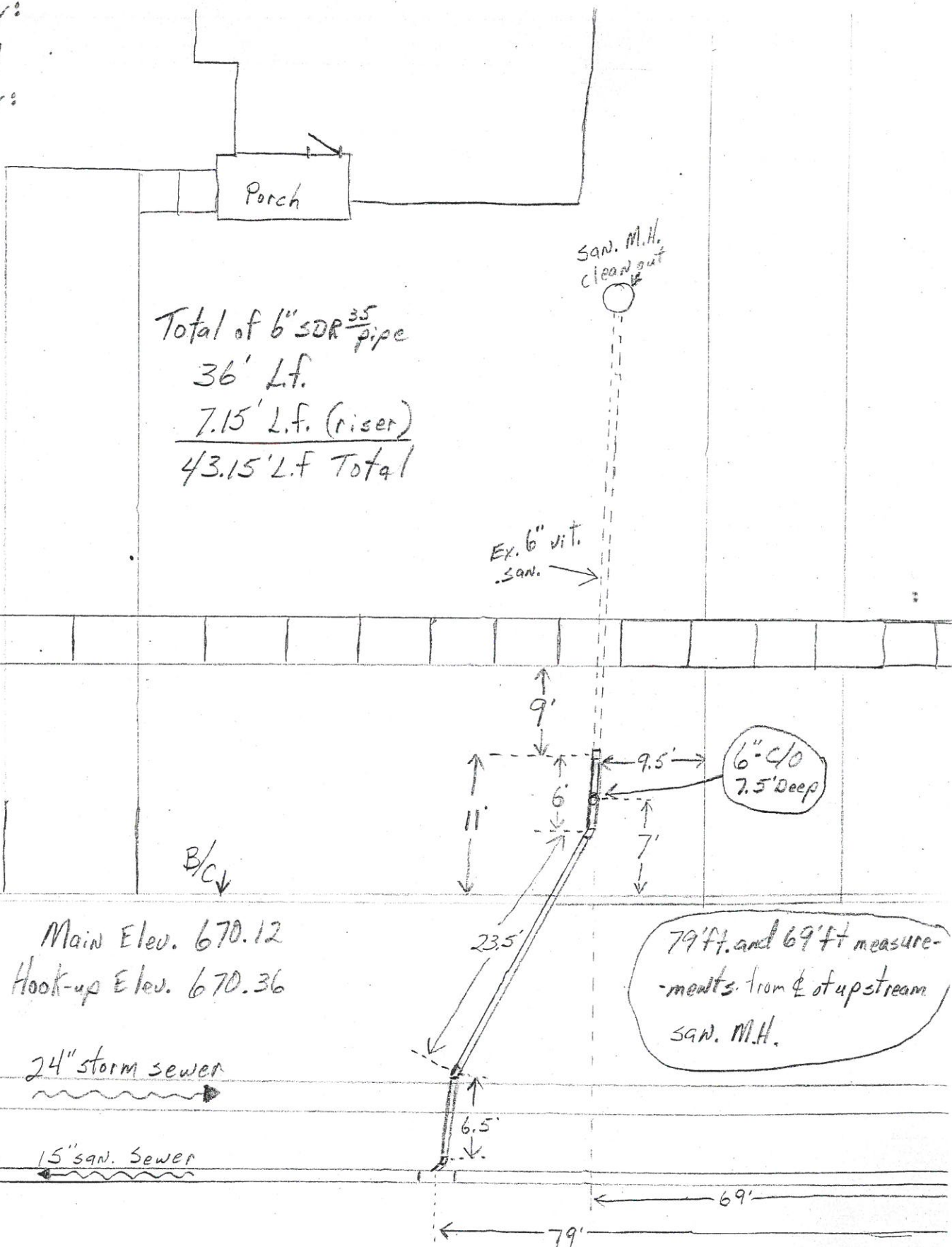


677.16  
5.46  
I.H. 682.62

Main 12.50  
House 12.26

Date Installed:  
9-18-01  
Installed by:  
S.E. Johnson  
Inspected by:  
Rex Moll

Scott St. Sewer Separation  
Res # 831



Total of 6" SDR<sup>35</sup> pipe  
36' L.F.  
7.15' L.F. (riser)  
43.15' L.F. Total

SAN. M.H.  
cleanout

Ex. 6" vit.  
san.

6" C/O  
7.5' Deep

Main Elev. 670.12  
Hook-up Elev. 670.36

24" storm sewer

15" san. Sewer

79 ft. and 69 ft. measure-  
ments from center of upstream  
SAN. M.H.

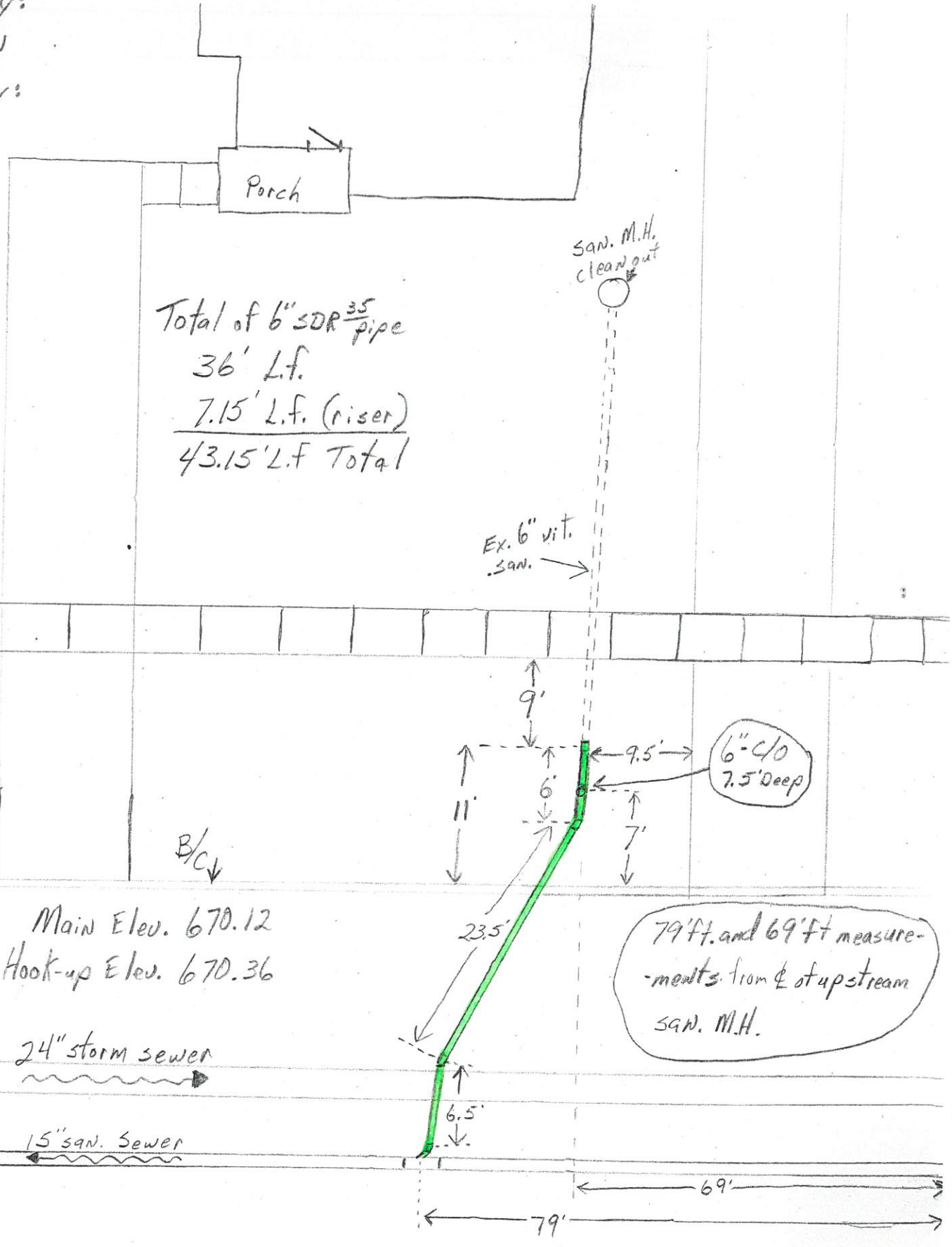
677.16  
5.46  
I.H. 682.62

Main 12.50  
house 12.26

Date Installed:  
9-18-01  
Installed by:  
S.E. Johnson  
Inspected by:  
Rex Moll

Scott St.  
Res # 831

### Sewer Separation



Total of 6" SDR<sup>35</sup> pipe  
36' L.f.  
7.15' L.f. (riser)  
43.15' L.f. Total

6" C/O  
7.5' Deep

79'ft. and 69'ft. measure-  
ments from  $\phi$  of upstream  
SAN. M.H.

Main Elev. 670.12  
Hook-up Elev. 670.36

24" storm sewer

15" san. Sewer